



£995 Per Month

The Copse, Sutton-In-Ashfield,

Welcome to **BuckleyBrown**, where every home is carefully presented, so you can explore with clarity and confidence.

BuckleyBrown
ESTATE AGENTS

"From the moment of entry, the property conveys a strong sense of quality and space, with a layout designed to enhance both comfort and functionality."

- Laura Jones, Lettings Manager



Effortless flow, sophisticated spaces...

From the moment you arrive, you are greeted by a property that instantly feels like home, with its attractive setting and welcoming appearance. Internally, the accommodation is both stylish and functional, offering the ideal environment for both relaxing and entertaining.



Step Inside

Presented in immaculate condition throughout, this beautifully refurbished two-bedroom bungalow offers stylish, move-in-ready accommodation with everything brand new from top to bottom.

Upon entering the property, you are welcomed into a bright entrance hall with the contemporary fitted kitchen conveniently positioned to the right. The kitchen has been thoughtfully designed to provide both practicality and modern appeal.

Continuing through the home, you'll find a generously sized living room, offering a comfortable and versatile space for relaxing and entertaining.

The property features a modern bathroom finished in a striking dark interior style, creating a sleek and sophisticated feel. To the rear of the bungalow are two well-proportioned bedrooms, both enjoying views over the garden. The second bedroom benefits from patio doors opening directly onto the rear garden, allowing plenty of natural light and providing seamless indoor-outdoor living.

Externally, the property boasts a private rear garden, ideal for enjoying the warmer months. To the front, there is a driveway providing off-road parking alongside a garage, offering additional storage or parking space.

This exceptional bungalow combines modern finishes with practical living and is ready for its next owner to move straight in and enjoy.





BuckleyBrown
ESTATE AGENTS







Life in

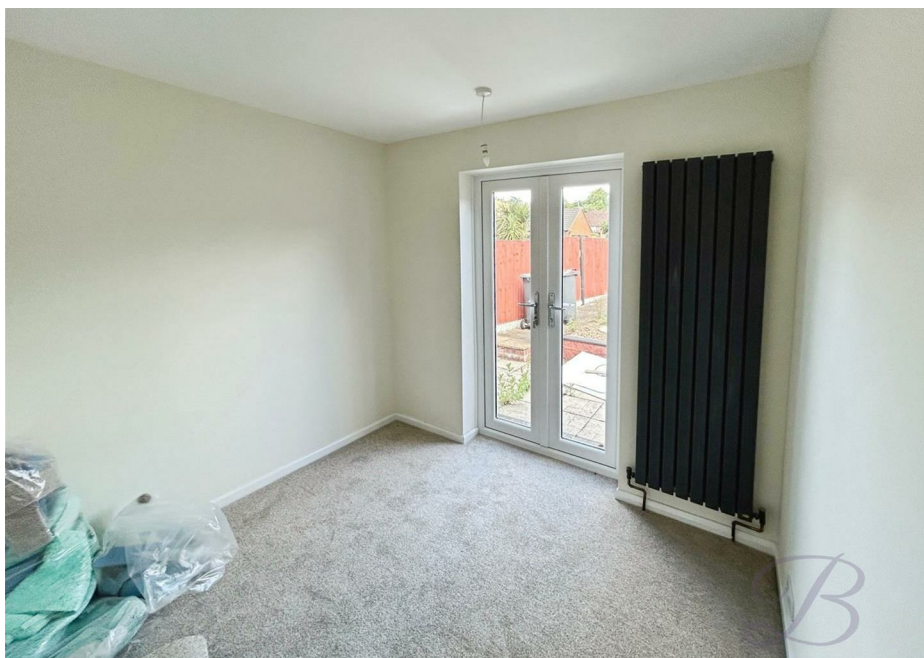
Sutton-in-Ashfield is a well-established and popular market town located in the Ashfield district of Nottinghamshire, offering a practical and well-connected setting with a strong sense of local community. Ideally positioned close to Mansfield and within easy reach of Nottingham, the town appeals to a wide range of buyers seeking convenience, accessibility and a well-served residential location.

The town offers a good selection of everyday amenities, centred around its traditional high street and surrounding retail areas. Residents benefit from a mix of supermarkets, independent shops, cafés and leisure facilities, along with a range of schools and healthcare services. Brierley Park and other nearby recreational spaces provide useful outdoor areas, making the location particularly appealing for families and those with active lifestyles.

Surrounded by pockets of open space and access to nearby countryside, Sutton-in-Ashfield offers a balance between town living and access to the outdoors. Local parks and walking routes provide opportunities for leisure and relaxation, while the wider Nottinghamshire countryside is only a short distance away, offering further green space for walking, cycling and outdoor activities.

The town is also well connected, with convenient access to the A38 and nearby junctions of the M1 motorway, making commuting to Nottingham, Derby and Sheffield straightforward. Sutton Parkway railway station also provides regular services to Nottingham and Worksop, adding further convenience for commuters and travel.

Sutton-in-Ashfield is well suited to families, first-time buyers and downsizers alike, offering a practical location with strong transport links, good local amenities and a settled community feel. With its combination of accessibility, services and nearby green space, it remains a popular and well-regarded location within Nottinghamshire.



These particulars are intended as a guide only and do not form part of any offer or contract. All descriptions, measurements, images and plans are provided for illustration purposes and should not be relied upon as statements of fact. Prospective purchasers should satisfy themselves as to the accuracy of the information. Buckley Brown Estate Agents accept no liability for any loss arising from reliance on these details.

© Buckley Brown Estate Agents 2026. All rights reserved.

Exceptional homes deserve
exceptional representation.

Let's Chat.

01623 633633

mansfield@buckleybrown.co.uk

buckleybrown.co.uk

BuckleyBrown
ESTATE AGENTS